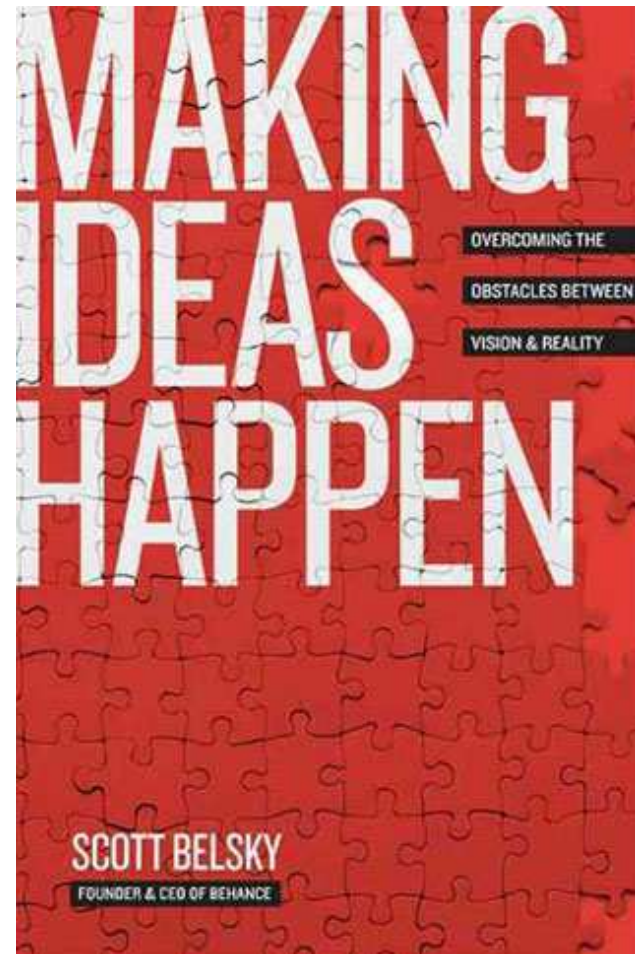


# Planning for Mission

Ryan Sim – [www.ryanbrsim.com](http://www.ryanbrsim.com)

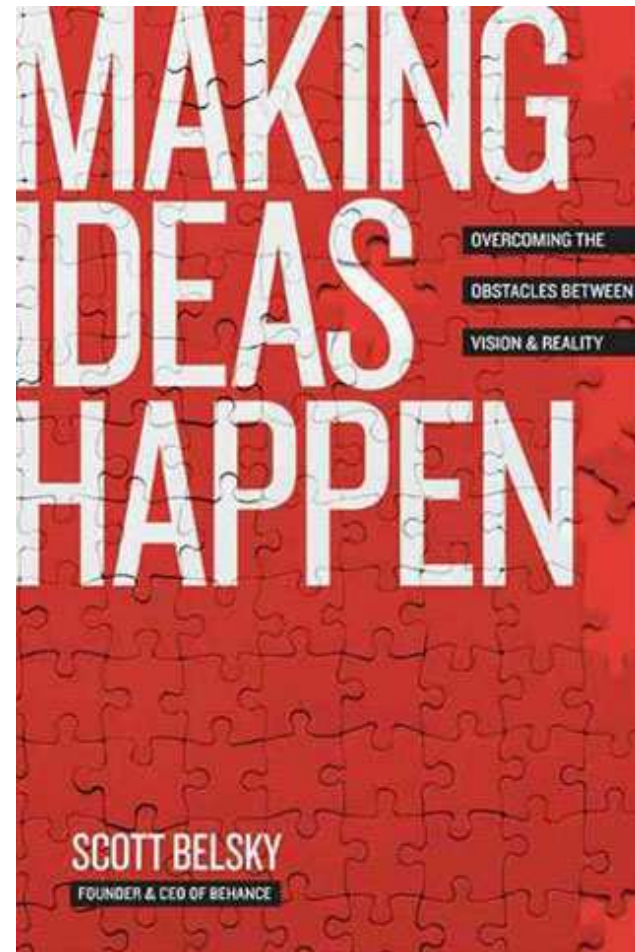
# Making Ideas Happen

- ❑ “Ideas don’t happen because they are great – or by accident”
- ❑ “Having the idea” is just a small part of the process, perhaps only 1% of the journey”



# Making Ideas Happen

Idea  
+  
Organization & Execution  
+  
Community  
+  
Leadership



# 1 Corinthians 9:24-27



Do you not know that in a race all the runners run, but only one receives the prize? So run that you may obtain it. Every athlete exercises self-control in all things. They do it to receive a perishable wreath, but we an imperishable. So I do not run aimlessly; I do not box as one beating the air. But I discipline my body and keep it under control, lest after preaching to others I myself should be disqualified.

# Starting Mission-Shaped Churches

- Target
- Task
- Team
- Timing
- Tools



# Video

# 5 T's for Lego Man in Space

- Target
- Task
- Team
- Timing
- Tools
- Pictures from Space
- Design & Launch & Recover
- 2 Kids & Lego Man
- 2 Years
- <\$500

# A (Space) Mission Profile

- Our mission is to take photos from space

by designing and launching a weather balloon

as a team of three (two guys and Lego Man)

with just \$500.



# Target

- Identify



# Task




# Task Force

- ❑ Young Professionals
- ❑ Condo Residents
- ❑ Strategic Thinkers
- ❑ Interested

You have been personally invited to the:

## **Route 1-8 Think Tank**



**How can we connect  
with unchurched  
people living near  
St. Paul's?**

- Sunday, February 7th, 12:30–1:30 PM
- Lunch Included
- Learn about the research and vision for Route 1-8
- Dream of more creative ways to serve, connect and disciple unchurched young urban professionals.
- RSVP to Ryan Sim—[rsim@stpaulsbloor.org](mailto:rsim@stpaulsbloor.org) or 416-961-8116 x230

# Team

- ❑ Task Forces v. Team
- ❑ Oversight:
  - ❑ Episcopal
  - ❑ Financial
  - ❑ Pastoral
  - ❑ Strategic



# Timing



- General
- Detailed
- Assume  
Success

# Ajax Project

- ❑ 6 months  
Research
- ❑ 1.5 years  
Team Building
- ❑ 1 year  
Launch
- ❑ 2 years  
Development

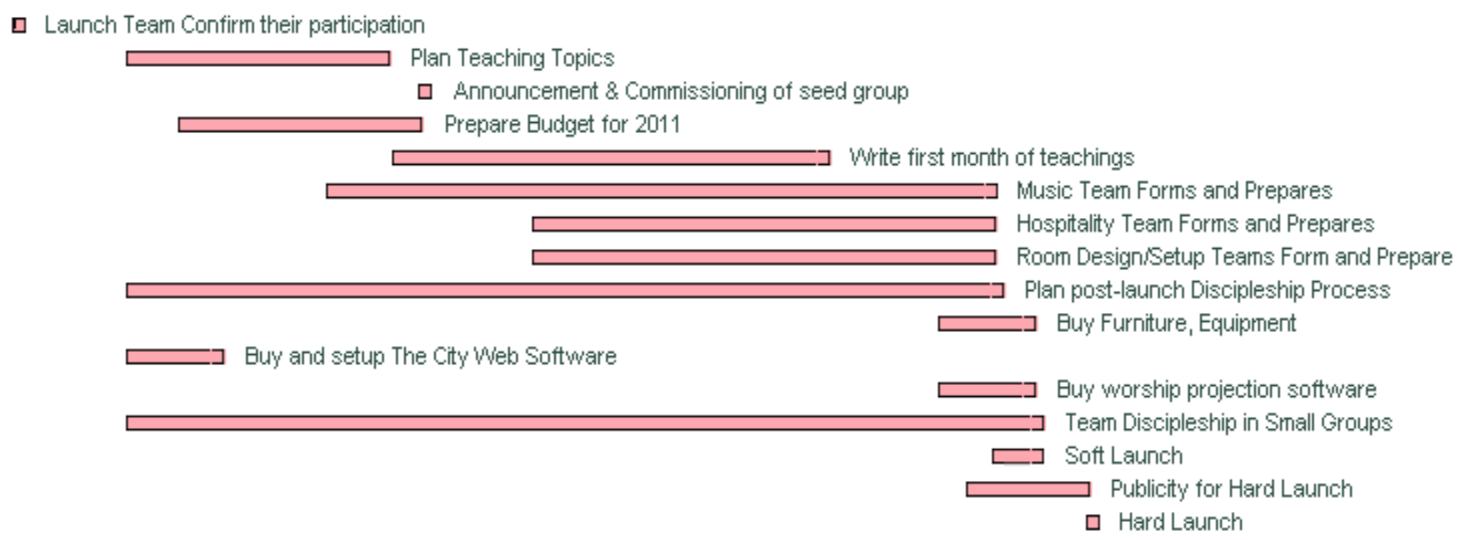


# Waymarks

- ❑ Phase 1 – Listening  
6-9 months
- ❑ Phase 2 – Starting Relationships  
6 months – 1 year
- ❑ Phase 3 – Developing Spiritual  
Community  
9 months – 3 years
- ❑ Phase 4 – Building Christian  
Community & Worship  
3-5 years
- ❑ Phase 5 – Reproducing  
Christian Community  
Beyond



- article
- rezi for EC Q&A
- before announcement
- survey
  - survey cards for both groups
- Survey Announcement
- once Survey
- Write Team Expectations
- Plan Team Discipleship
- Collect and Analyze Survey Results
  - Select Team
  - Invite Team to BBQ
    - Launch Team Prospects BBQ





# Sustainability

- ❑ Self-Funding
- ❑ Self-Governing
- ❑ Self-Reproducing



# Tools

- ❑ Facilities
- ❑ Staffing
- ❑ Publicity
- ❑ Resources
- ❑ Finances



# Budgeting

- ❑ Income
  - ❑ Grants
  - ❑ Offerings (contribution income)
- ❑ Staff
  - ❑ Planter's Stipend
  - ❑ Planter's Moving Expense
  - ❑ Planter's Housing and Utilities Allowance
  - ❑ Planter's Health Insurance & Life Insurance
  - ❑ Planter's Pension
  - ❑ Planter's CPP & EI
  - ❑ Planter's Other Benefits
  - ❑ Planter's Travel Expense Reimbursement

# Budgeting

## □ Ministry

- Advertising (Direct mail, online, newspaper ads, branding, etc.)
- Planter Coaching & Training
- Web Site Expenses
- Communications
- Office Supplies
- Office and Computer Equipment/Software/etc.
- Telephone
- Christian Education and Discipleship/Small Groups
- Children's and Youth Ministry
- Hospitality and Fellowship Ministries
- Demographic Study & Community Profile

# Budgeting

- ❑ Mission
  - ❑ Allotment
  - ❑ Outreach
- ❑ Worship
  - ❑ Meeting Place and Storage Rental/Lease
  - ❑ Music & Copyright Licenses
  - ❑ Equipment, Supplies
- ❑ Other

# Budget

Proposed Church Planting Budget Worksheet	YEAR 1	YEAR 2	YEAR 3	YEAR 4	YEAR 5
<b>INCOME</b>					
Offerings (contribution income)	\$ -	\$ -	\$ -	\$ -	\$ -
Grants	\$ -	\$ -	\$ -	\$ -	\$ -
<b>Total Income</b>	\$ -	\$ -	\$ -	\$ -	\$ -
<b>STAFF</b>					
Planter's Stipend	\$ -	\$ -	\$ -	\$ -	\$ -
Planter's Moving Expense	\$ -	\$ -	\$ -	\$ -	\$ -
Planter's Housing and Utilities Allowance	\$ -	\$ -	\$ -	\$ -	\$ -
Planter's Health Insurance & Life Insurance	\$ -	\$ -	\$ -	\$ -	\$ -
Planter's Pension	\$ -	\$ -	\$ -	\$ -	\$ -
Planter's CPP & EI	\$ -	\$ -	\$ -	\$ -	\$ -
Planter's Other Benefits	\$ -	\$ -	\$ -	\$ -	\$ -
Planter's Travel Expense Reimbursement	\$ -	\$ -	\$ -	\$ -	\$ -
<b>TOTAL STAFF</b>	\$ -	\$ -	\$ -	\$ -	\$ -
<b>MINISTRY EXPENSES</b>					
Advertising (Direct mail, online, newspaper ads, branding, etc.)	\$ -	\$ -	\$ -	\$ -	\$ -
Planter Coaching & Training	\$ -	\$ -	\$ -	\$ -	\$ -
Web Site Expenses	\$ -	\$ -	\$ -	\$ -	\$ -
Communications	\$ -	\$ -	\$ -	\$ -	\$ -
Office Supplies	\$ -	\$ -	\$ -	\$ -	\$ -
Office and Computer Equipment/Software/etc.	\$ -	\$ -	\$ -	\$ -	\$ -
Telephone	\$ -	\$ -	\$ -	\$ -	\$ -
Christian Education and Discipleship/Small Groups	\$ -	\$ -	\$ -	\$ -	\$ -
Children's and Youth Ministry	\$ -	\$ -	\$ -	\$ -	\$ -
Hospitality and Fellowship Ministries	\$ -	\$ -	\$ -	\$ -	\$ -
Demographic Study & Community Profile	\$ -	\$ -	\$ -	\$ -	\$ -
Other	\$ -	\$ -	\$ -	\$ -	\$ -
<b>TOTAL MINISTRY EXPENSES</b>	\$ -	\$ -	\$ -	\$ -	\$ -

# Budget

<b>MISSION</b>					
Allotment	\$ -	\$ -	\$ -	\$ -	\$ -
Outreach	\$ -	\$ -	\$ -	\$ -	\$ -
Other					
<b>TOTAL MISSION EXPENSES</b>	\$ -	\$ -	\$ -	\$ -	\$ -
<b>WORSHIP</b>					
Meeting Place and Storage Rental/Lease	\$ -	\$ -	\$ -	\$ -	\$ -
Music & Copyright Licenses	\$ -	\$ -	\$ -	\$ -	\$ -
Equipment, Supplies	\$ -	\$ -	\$ -	\$ -	\$ -
Other					
<b>TOTAL FACILITIES EXPENSES</b>	\$ -	\$ -	\$ -	\$ -	\$ -
<b>TOTAL INCOME</b>	\$ -	\$ -	\$ -	\$ -	\$ -
<b>TOTAL EXPENSES</b>	\$ -	\$ -	\$ -	\$ -	\$ -
<b>BALANCE</b>	\$ -	\$ -	\$ -	\$ -	\$ -

# 5 T's for Lego Man in Space

- Target
- Task
- Team
- Timing
- Tools
- Pictures from Space
- Design & Launch & Recover
- 2 Kids & Lego Man
- 2 Years
- <\$500



# A (Space) Mission Profile

- Our mission is to take photos from space

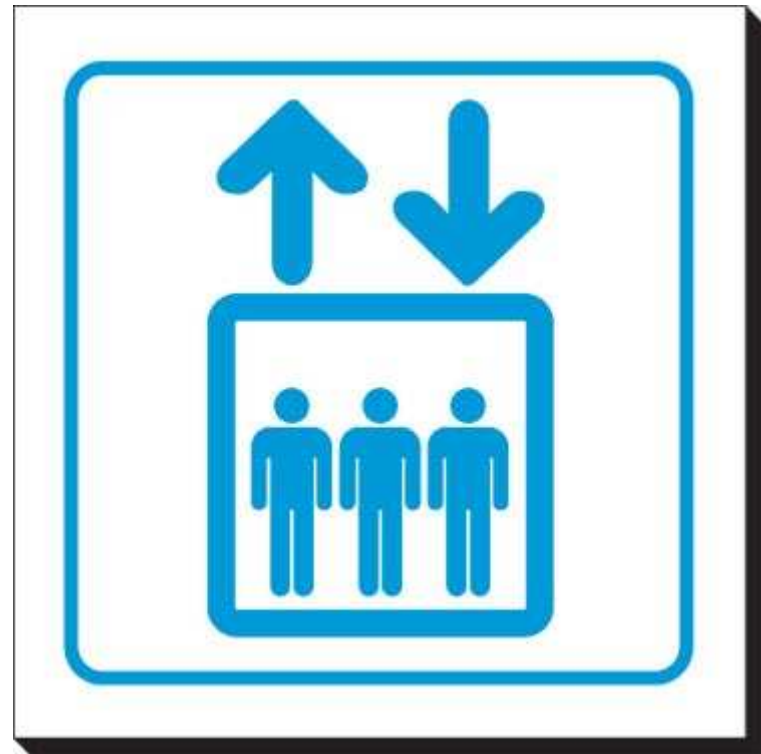
by designing and launching a weather balloon

as a team of three (two guys and Lego Man)

with just \$500.

# A (Church) Mission Profile

- ❑ Target
- ❑ Task
- ❑ Team
- ❑ Timing
- ❑ Tools

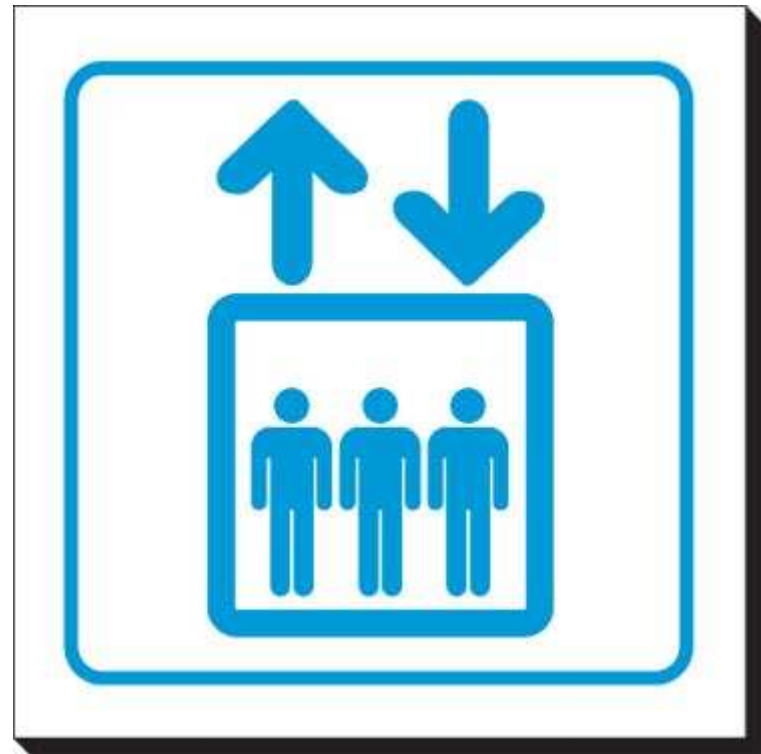


# Questions?



# A (Church) Mission Profile

- ❑ Target
- ❑ Task
- ❑ Team
- ❑ Timing
- ❑ Tools



# Questions?

